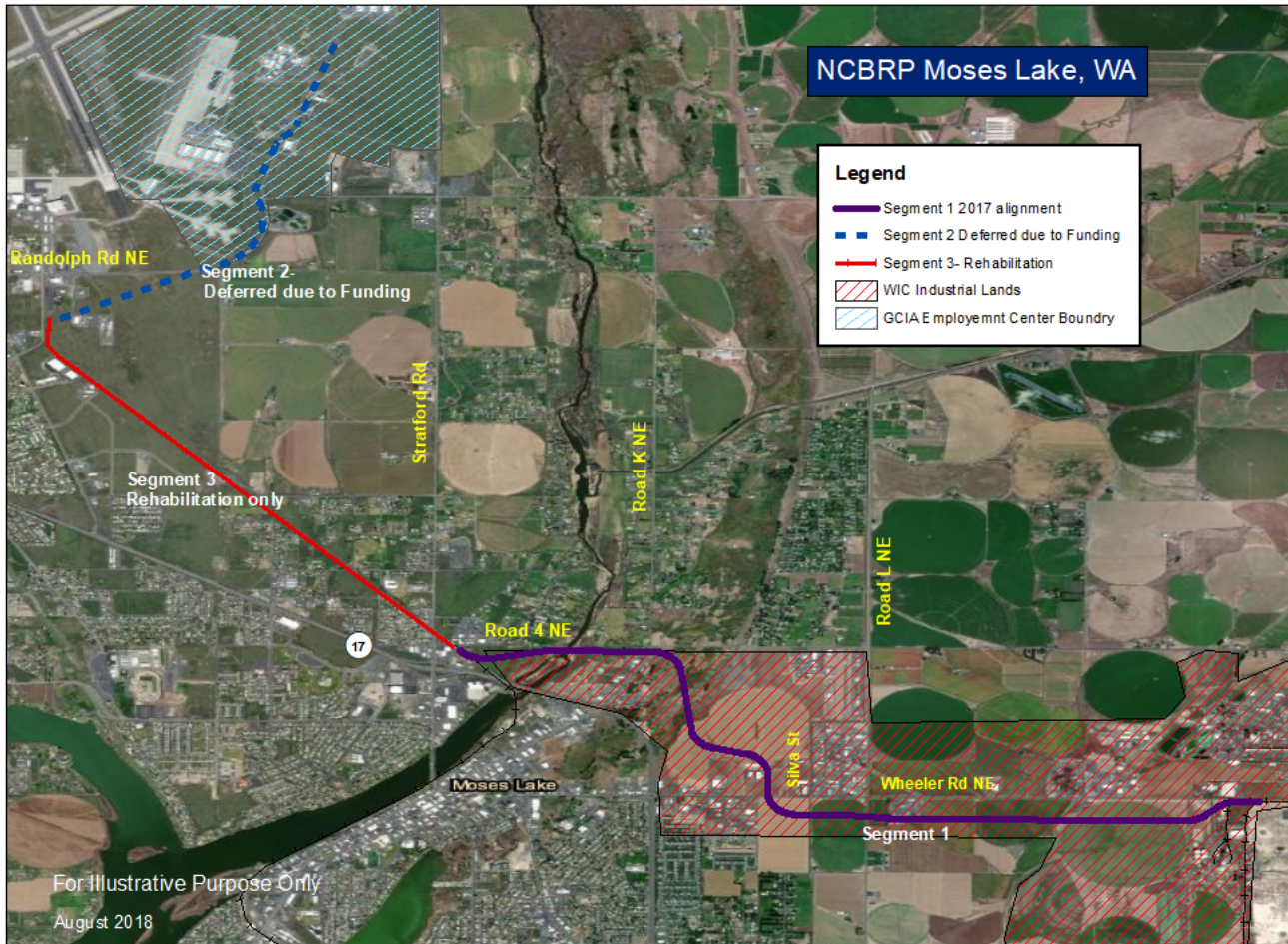


Northern Columbia Basin Rail Project

- NEPA Approved by FRA and STB- Completed June 2020
- Currently in the ROW Phase
- Construction to Start in late Fall 2022, Complete in early 2024.
- Operations will start with 1 Round trip (RT) train of 10 cars/ week, not to exceed 25 mph. Forecast to grow to 1 RT daily by 2045.
- Dispatch Operators will coordinate to ensure unrestricted Emergency Response.



**PORT OF
MOSES LAKE**

GCIA Employment Center

Alternative 1- Heavy Manufacturing/ Warehousing	Alternative 2- Light Manufacturing/ Technology
70:30 mix of these two industrial uses	70:30 mix of these two industrial uses
Total of 8.8 million sq. ft. of new building area over 20 year build out period 6.3 million sq. ft. of new heavy manufacturing/ warehousing and 2.5 million sq. ft. of new aviation development/ revenue support building area.	Total of up to 10.1 million sq. ft. of new building areas at full build out 7.2 million sq. ft. of new light manufacturing/technology building area and 2.9 million sq. ft. of new aviation development/revenue support uses.
Total capacity for approximately 13,500 new employees	Total capacity for approximately 19,000 new employees.

For more information contact

Port of Moses Lake
info@portofmoseslake.com
 509.762.5363
www.PortofMosesLake.com



Connecting roads, rails, and runways for jobs

Connecting roads, rails, and runways for jobs

The NCBRP will restore vital rail service, lost in 2009, to Moses Lake, the Grant County International Airport, the Wheeler Corridor, and 1,250 acres of industrial lands available for development in the GCIA Employment Center. This route, which bypasses Downtown Moses Lake, will also deliver rail access to more than 1,000 acres of industrial lands along the Wheeler Industrial Corridor. It will eliminate a major impediment to retaining and attracting new industries in rural Central Washington by providing a cost-effective transportation option for existing businesses, agricultural producers and new industries to ship to/from PNW ports and the Midwest.

Segment 1:

- Provides a new five-mile-long rail line to serve over 1,000 acres of industrial-zoned lands in the Wheeler Industrial Corridor within Moses Lake;
- Provides freight rail access to help existing businesses and agricultural producers expand, and to attract new businesses and industry to the corridor;
- Route alignment will primarily be west along the southern portion of Wheeler Road, shifting northwest to cross over Crab Creek and join the rehabilitated existing rail line (NCBR Segment 3) to the Port/GCIA;
- Allows for trains to be re-routed out of downtown Moses Lake, creating new opportunities for public access;
- Allows for trains to be removed from aging rail infrastructure;
- Constructs four at-grade rail crossings;
- Seg 1 is scheduled to begin construction in late 2022 pending permitting and ROW acquisition.

Segment 3:

- The rail line presently terminates just south of the Port/GCIA and is owned by the Columbia Basin Railroad Company (CBRW);
- Acquires and rehabilitates approximately three miles of existing track between Crab Creek and the GCIA to current standards to restore rail service to the Port and GCIA by connecting Segment 1 and the future Segment 2;
- Improves two at-grade crossings.

The NCBRP is having a positive impact:

- ▶ Many Port tenants have expressed interest in possibly expanding their businesses
 - Removing Trucks off our local roads is a priority as we bring in new industrial customers.
- ▶ The Port continues to work with potential customers to market rail service and land owners to negotiate ROW acquisitions and temporary construction easements.