

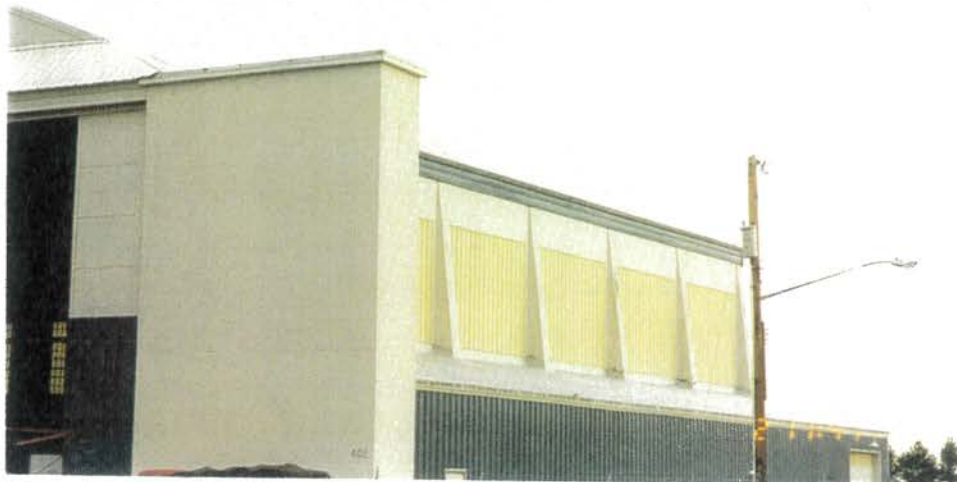
ATTACHMENT A  
PHOTOGRAPHS

PHOTO #1:



BUILDING 401  
NORTH ELEVATION

PHOTO #2:



BUILDING 401  
WEST ELEVATION

PHOTO #3:



BUILDING 401  
SOUTH ELEVATION

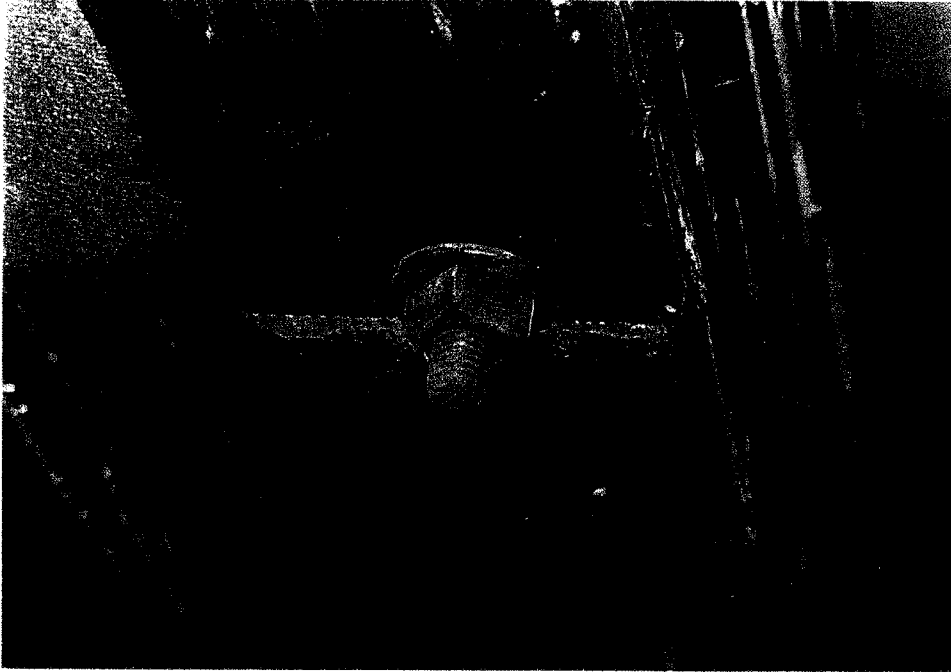
PHOTO #4:

BUILDING 401  
SOUTHEAST  
ELEVATION

(NOTE: WALL  
SEPARATION  
AT CHIMNEY)



PHOTO #5:



TRUSS A - LOOSE STITCH BOLTS AT TOP CHORD  
(TYPICAL)

PHOTO #6:



TRUSS A - LOOSE SIDE PLATE BOLTS AT  
BOTTOM CHORD SPLICE (TYPICAL)

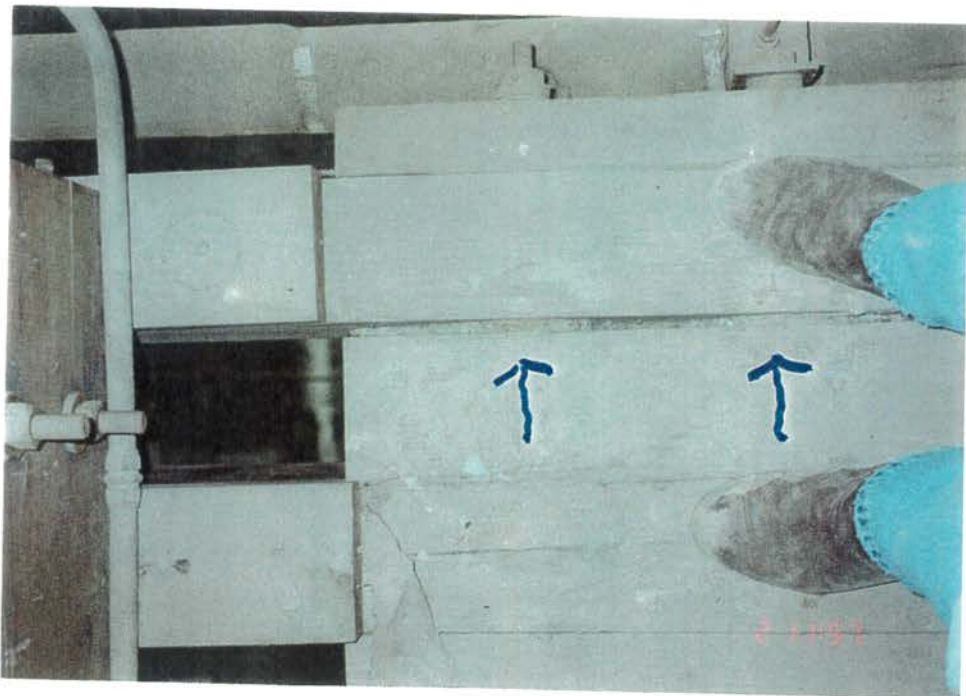


PHOTO #7:



TRUSS B - BOTTOM CHORD SPLIT AT EAST HEEL  
BOTH SIDES

PHOTO #8:



TRUSS B - LOOSE SIDE PLATE BOLTS AT SPLICE 2  
(NOTE: SPLIT RINGS IN GAP)

PHOTO #9:



TRUSS B - BOTTOM CHORD SPLIT

PHOTO #10:



TRUSS B - SPLIT SIDE PLATE AND  
BOTTOM CHORD SPLIT



PHOTO #11:



TRUSS B - SPLIT BOTTOM CHORD

PHOTO #12:



TRUSS B - SPLIT BOTTOM CHORD

PHOTO #13:

TRUSS B  
TYPICAL WEB  
CRACK



PHOTO #14:

TRUSS B  
TYPICAL WEB  
CRACK





PHOTO #15:



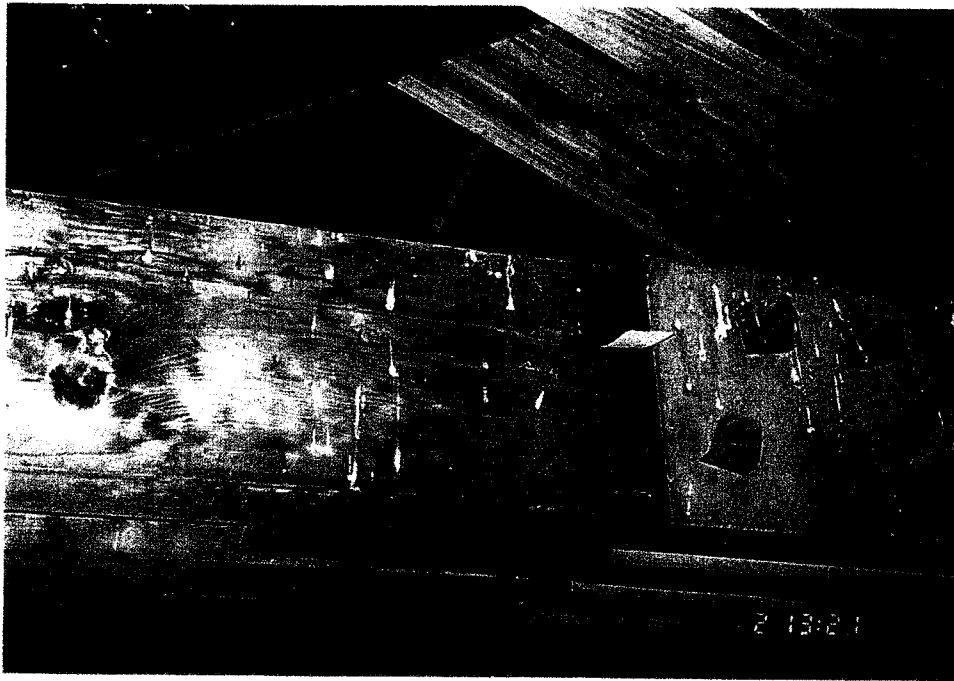
TRUSS B - SPLIT SIDE PLATE AT SPLICE 6

PHOTO #16:



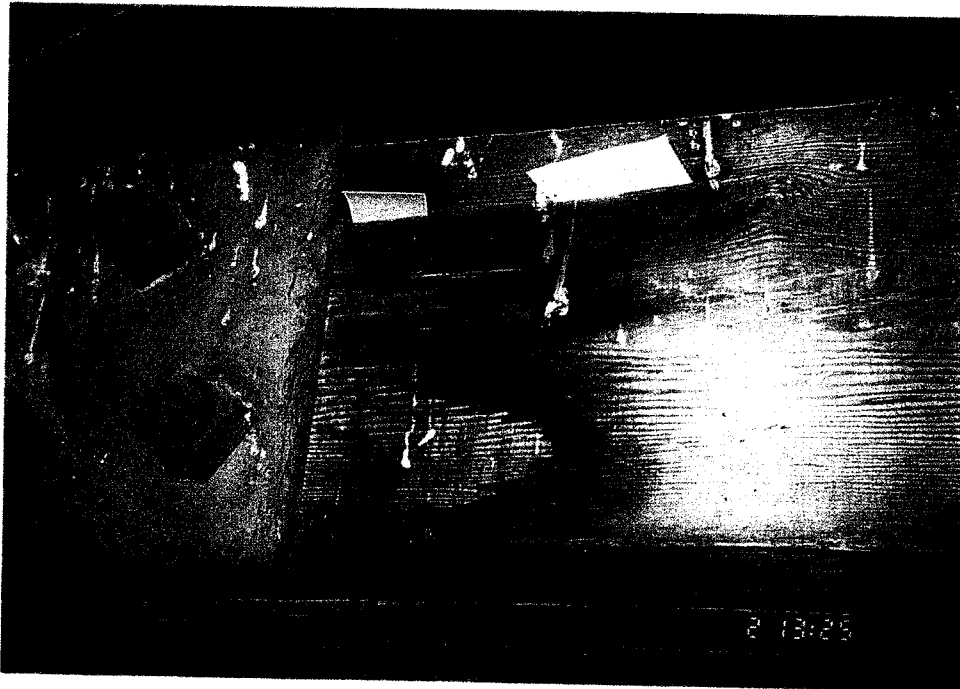
TRUSS B - BOTTOM CHORD SPLIT AT WEST HEEL

PHOTO #17:



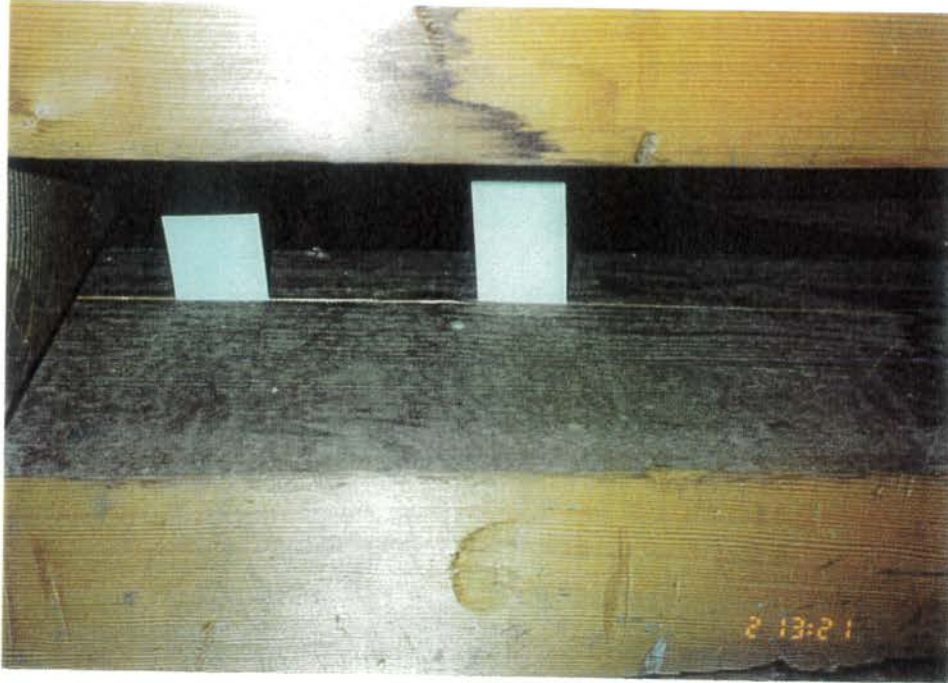
TRUSS C - BOTTOM CHORD SPLIT AT EAST HEEL

PHOTO #18:



TRUSS C - BOTTOM CHORD SPLIT AT EAST HEEL

PHOTO #19:



TRUSS C - BOTTOM CHORD SPLIT AT EAST HEEL

PHOTO #20:



TRUSS C - SPLIT SIDE PLATE AT SPLICE 2



PHOTO #21:



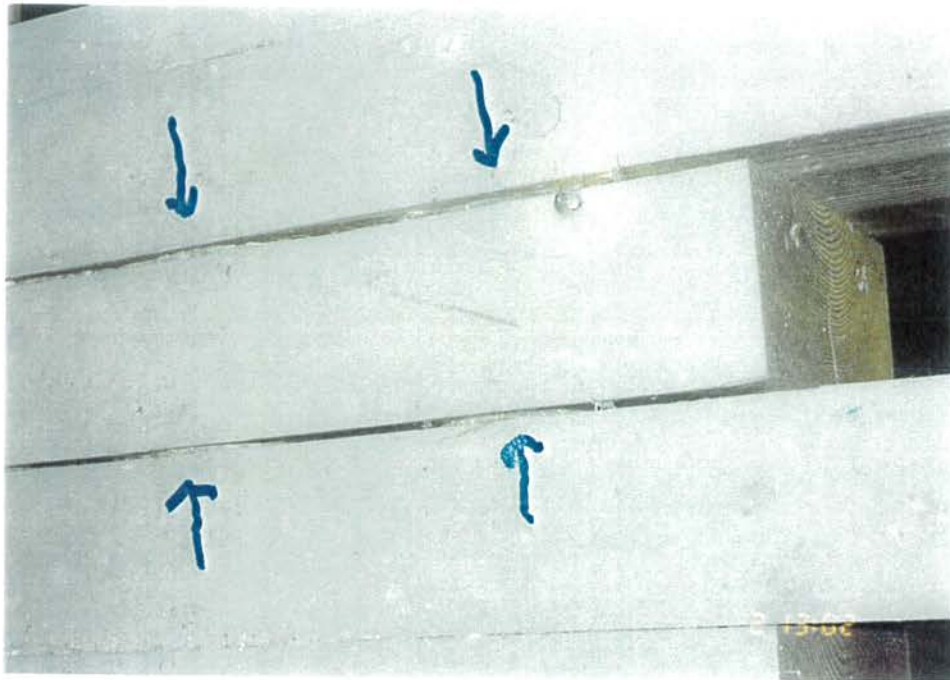
TRUSS C - SPLIT SIDE PLATE AT SPLICE 6

PHOTO #22:



TRUSS C - SPLIT SIDE PLATE AT SPLICE 3  
(NOTE: SPLIT RING CONNECTOR IN GAP)

PHOTO #23:



TRUSS C - LOOSE SIDE PLATE BOLTS AT SPLICE  
(NOTE: SPLIT RINGS IN GAP)

PHOTO #24:



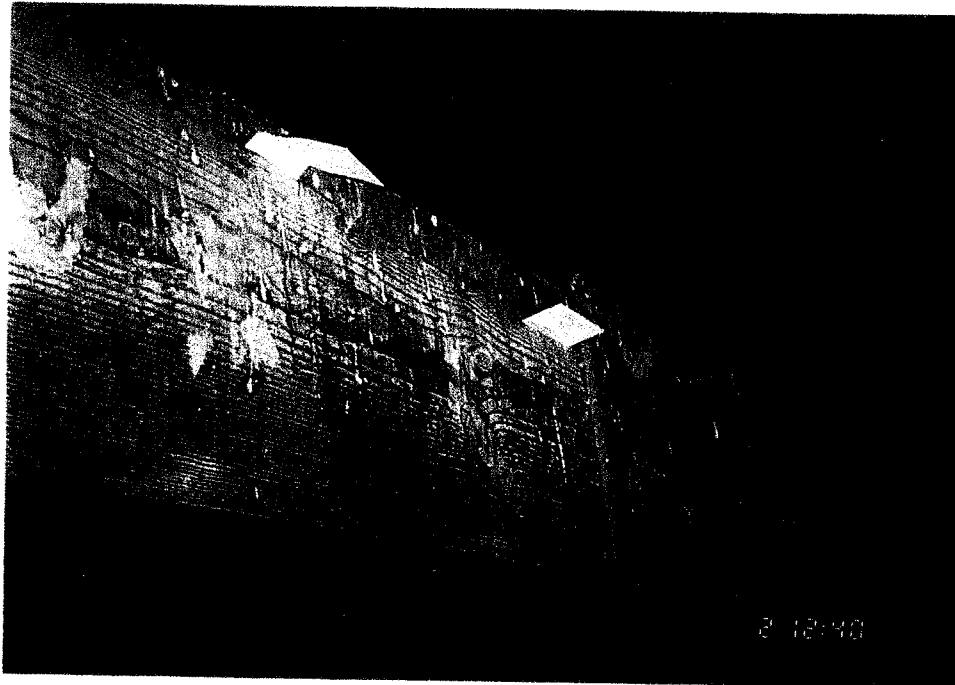
TRUSS C - BOTTOM CHORD SPLITS AT WEST HEEL

PHOTO #25:

TRUSS C  
BOTTOM CHORD  
SPLIT AT WEST  
HEEL



PHOTO #26:



TRUSS C - BOTTOM CHORD SPLIT AT WEST HEEL



PHOTO #27:

TRUSS D  
LOOSE ANCHOR  
BOLT (TYPICAL)



PHOTO #28:



TRUSS D - BOTTOM CHORD SPLIT AT EAST HEEL

PHOTO #29:

TRUSS D  
TWISTED WEB  
WITH DISENGAGED  
SPLIT RING

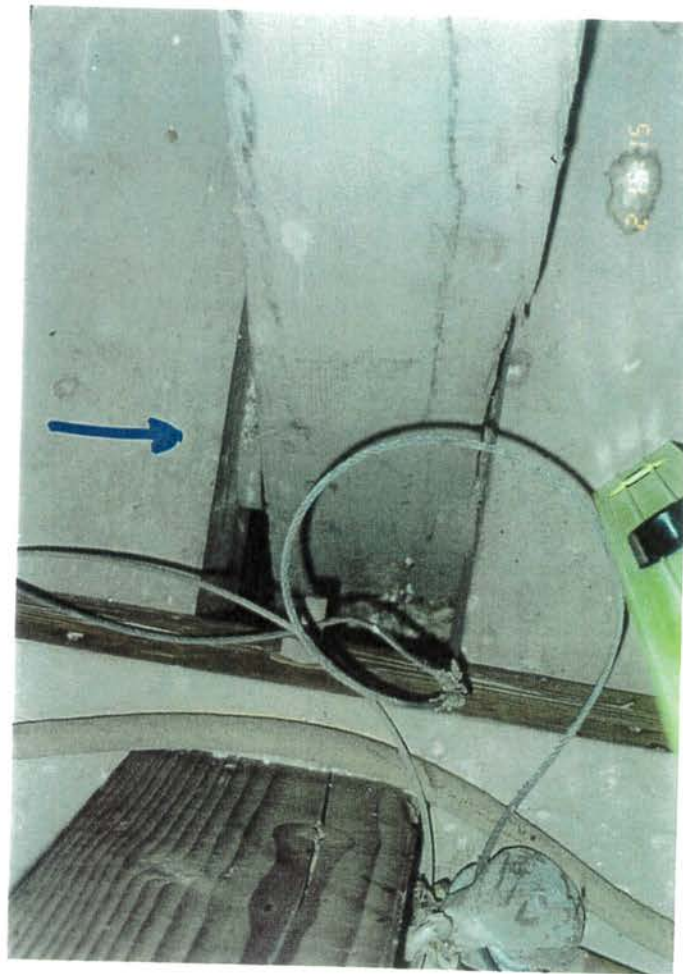
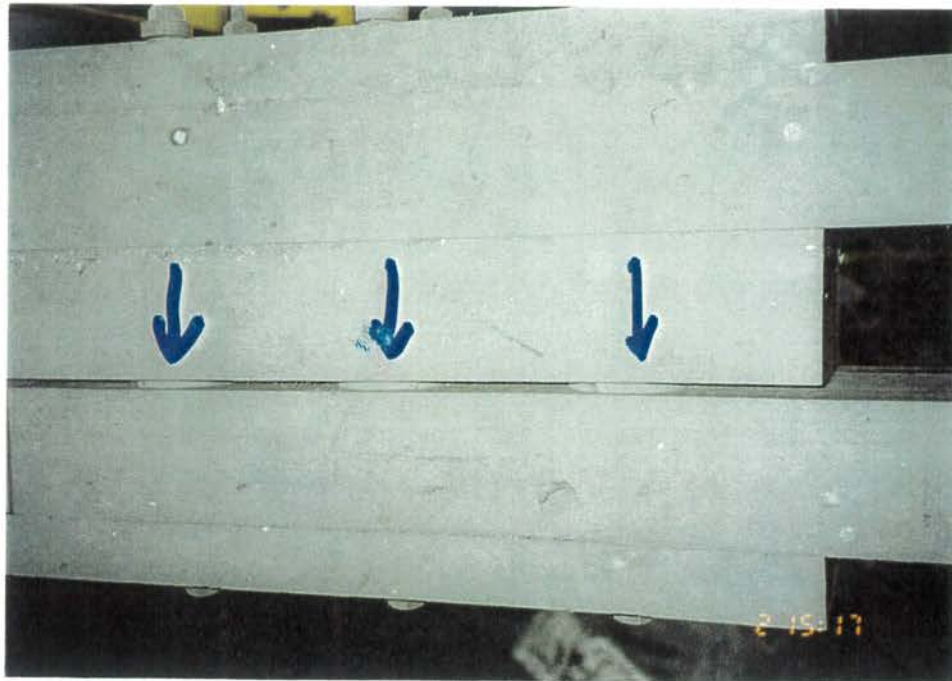


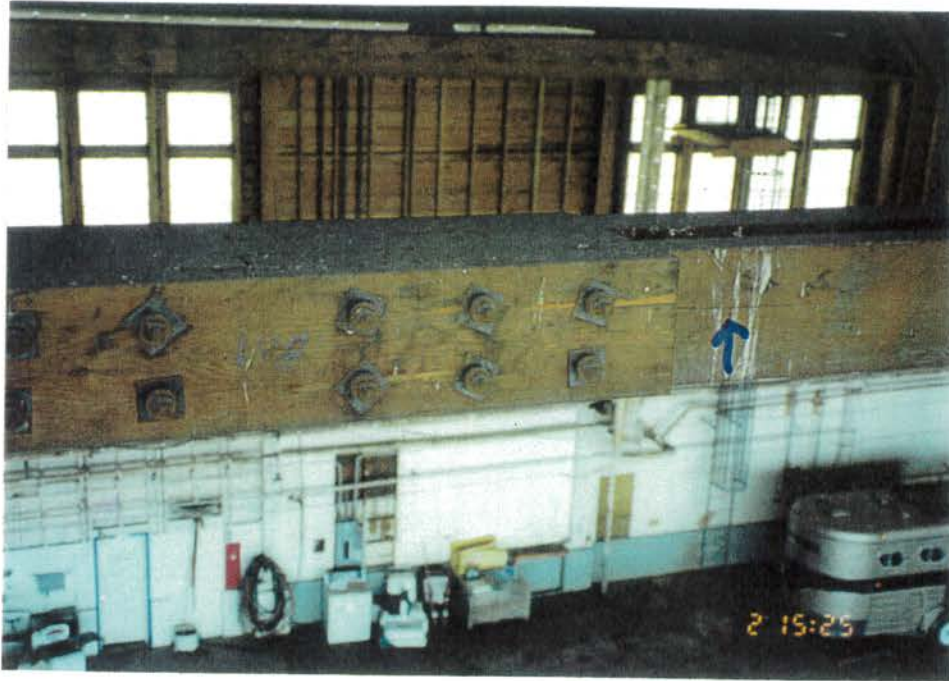
PHOTO #30:



TRUSS D - LOOSE SIDE PLATE BOLTS AT SPLICE 2  
(NOTE: SPLIT RINGS IN GAP)

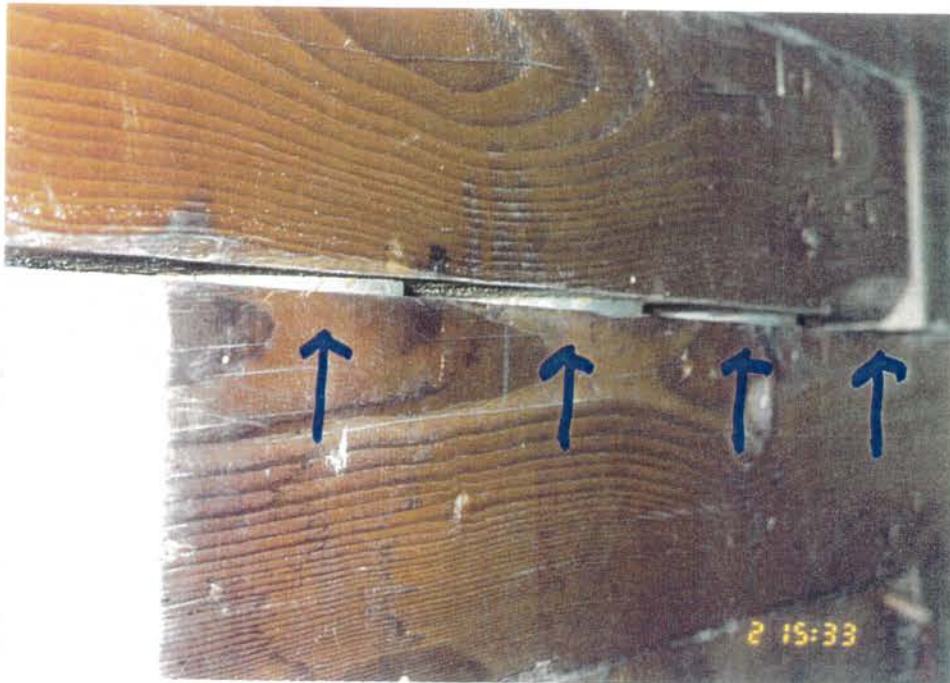


PHOTO #31:



TRUSS D - SPLIT SIDE PLATE AT SPLICE 3  
(NOTE: SMALL BOTTOM CHORD CRACK)

PHOTO #32:



TRUSS D - LOOSE SIDE PLATE BOLTS AT SPLICE 4  
(NOTE: SPLIT RINGS IN GAP)

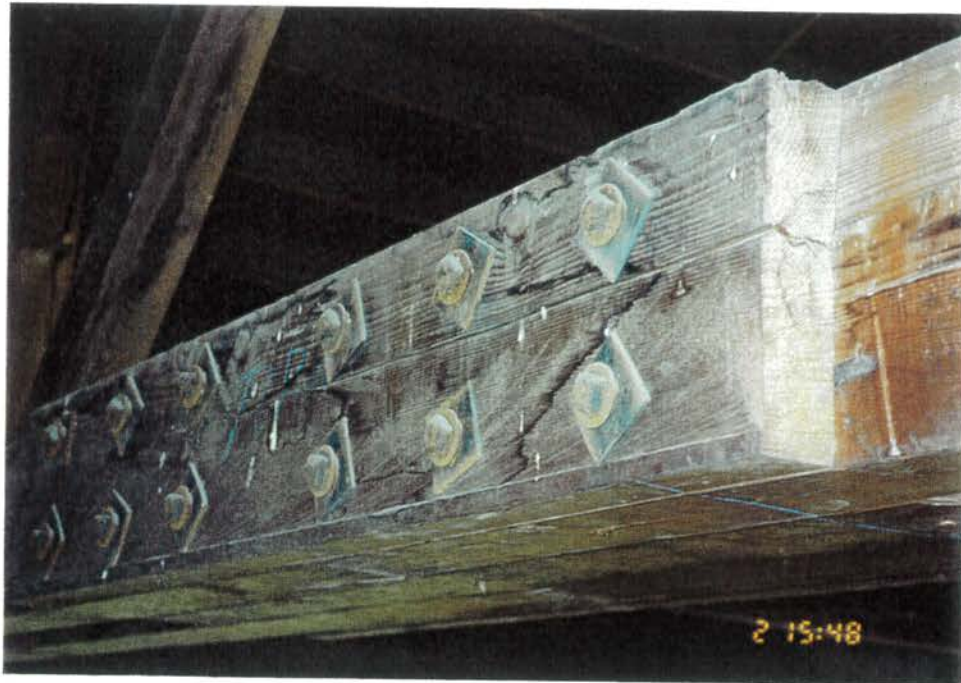


PHOTO #33:



TRUSS D - SPLIT BOTTOM CHORD

PHOTO #34:



TRUSS D - SPLIT SIDE PLATE AT SPLICE 6

PHOTO #35:



TRUSS D - SPLIT SIDE PLATE AT SPLICE 6  
(NOTE: SPLIT BOTTOM CHORD)

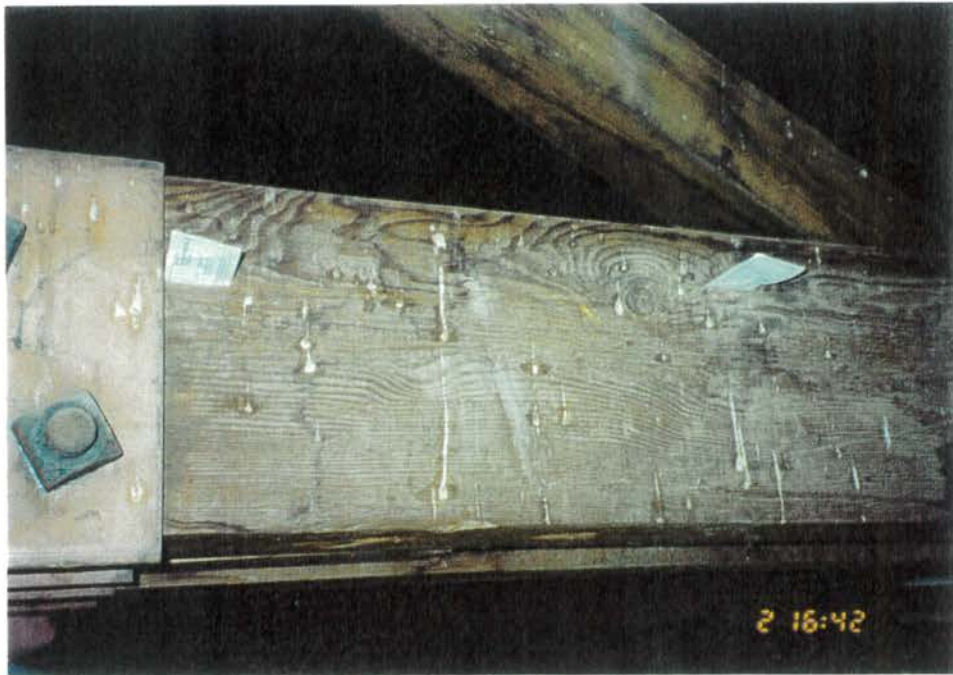
PHOTO #36:



TRUSS D - BOTTOM CHORD SPLIT AT WEST HEEL



PHOTO #37:



TRUSS E - BOTTOM CHORD SPLIT AT EAST HEEL

PHOTO #38:

TRUSS E  
TWISTED WEB  
WITH DISENGAGED  
SPLIT RING

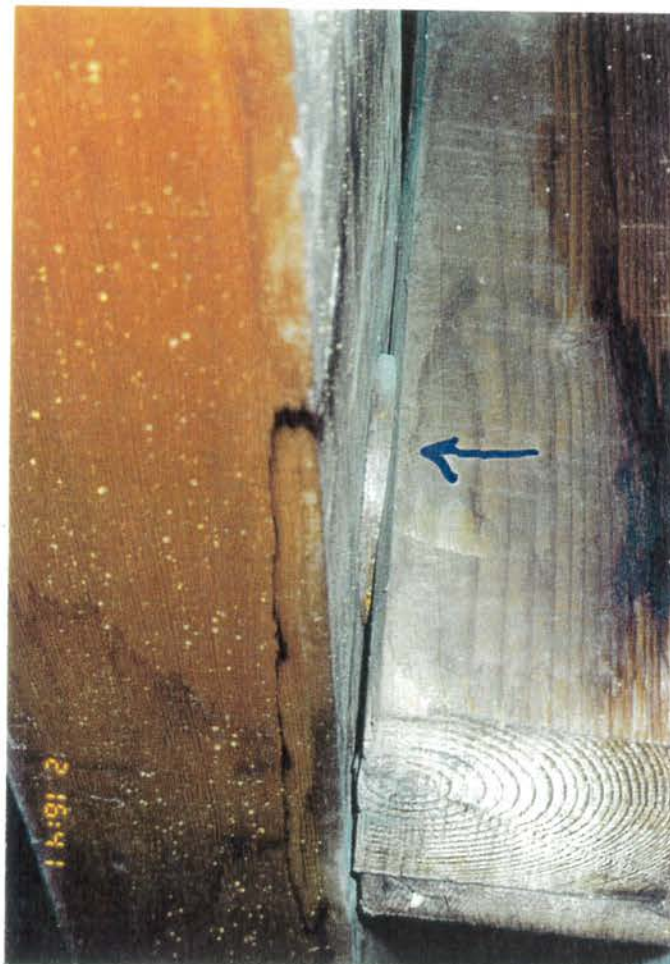
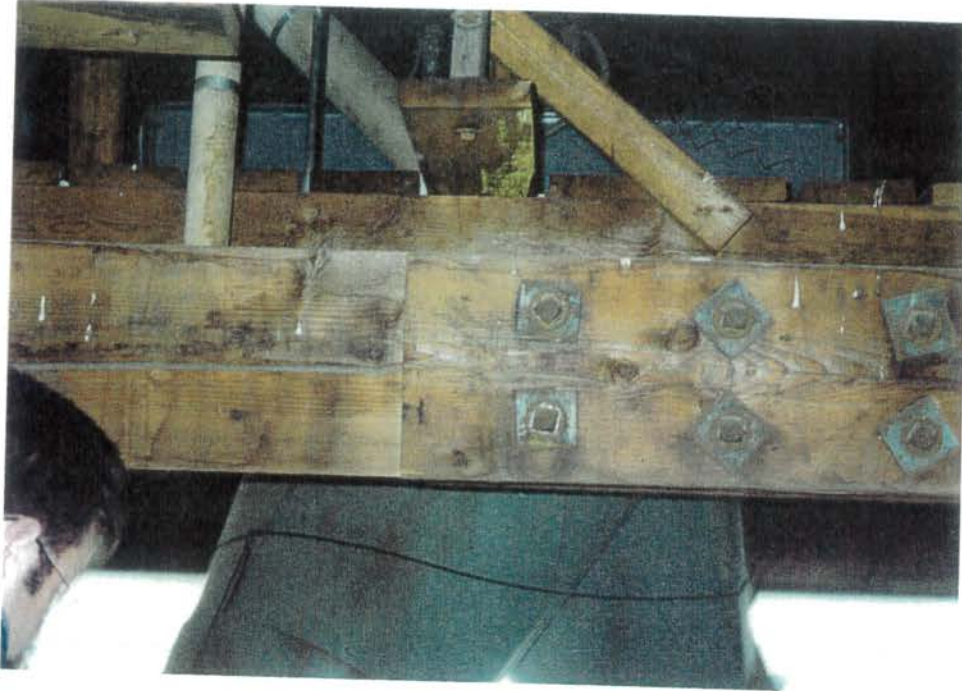




PHOTO #39:



TRUSS E - BOTTOM CHORD SPLIT  
(NOTE: SMALL CRACKS IN SIDE PLATE)

PHOTO #40:



TRUSS E - BOTTOM CHORD SPLIT  
(NOTE: SMALL CRACKS IN SIDE PLATE)

PHOTO #41:



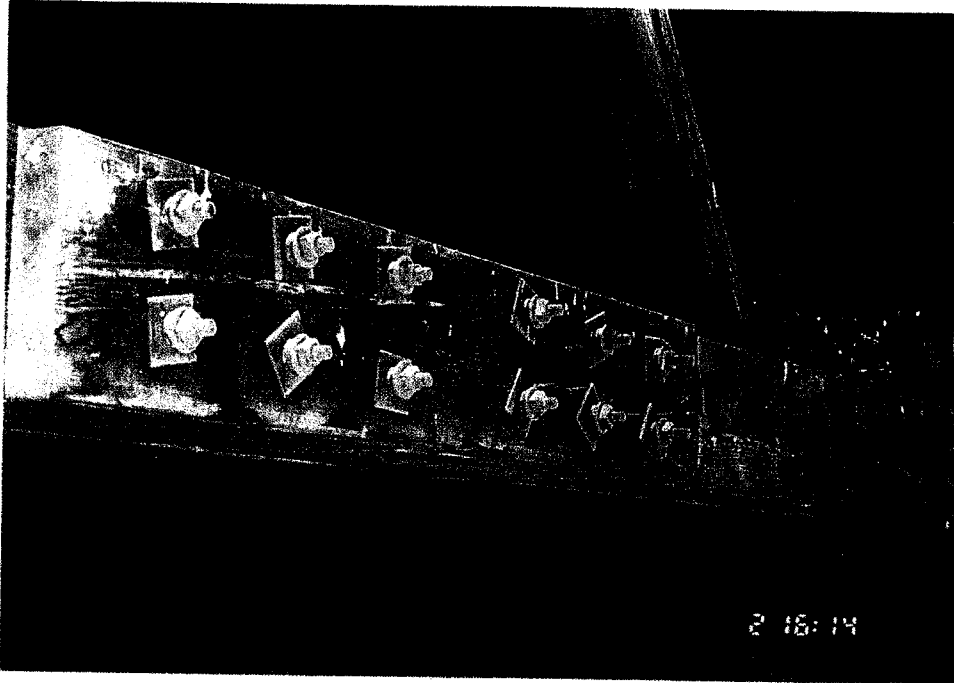
TRUSS E - SPLIT SIDE PLATE AT SPLICE 3  
(NOTE: BOTTOM CHORD SPLIT BEYOND)

PHOTO #42:



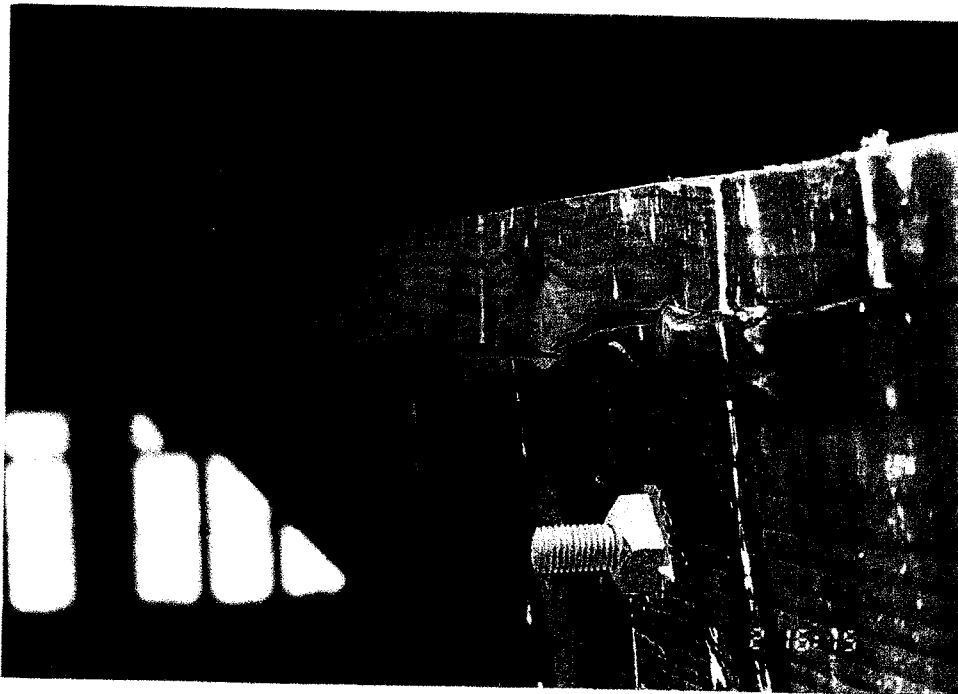
TRUSS E - SPLIT SIDE PLATE AT SPLICE 5  
(NOTE: BOTTOM CHORD SPLIT)

PHOTO #43:



TRUSS E - SPLIT SIDE PLATE AT SPLICE 6  
(NOTE: BOTTOM CHORD SPLIT BEYOND)

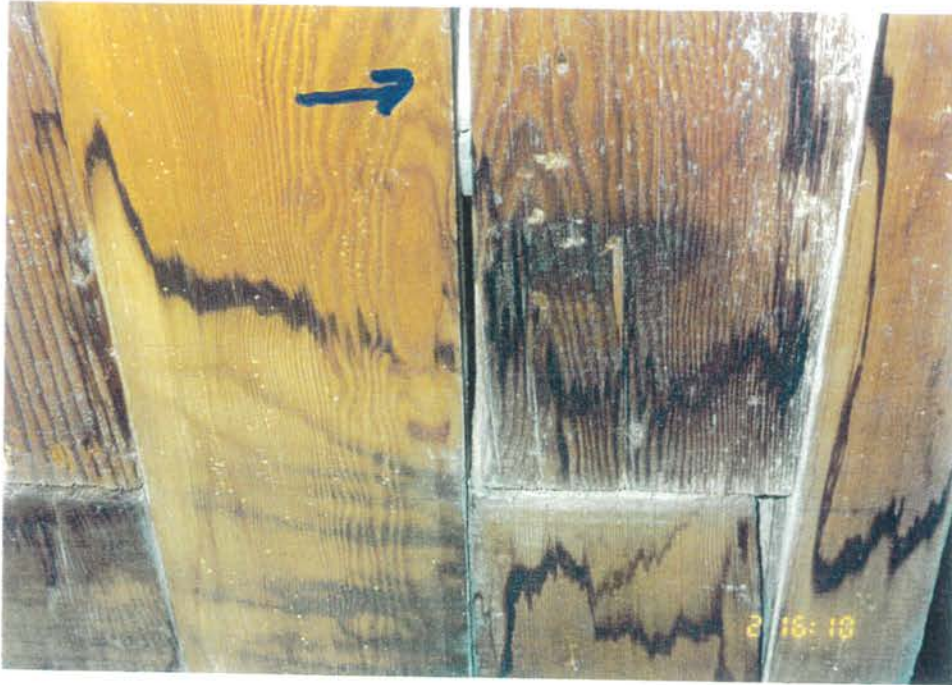
PHOTO #44:



TRUSS E - BOTTOM CHORD SPLIT



PHOTO #45:



TRUSS E - LOOSE SIDE PLATE BOLTS AT SPLICE 6  
(NOTE: SPLIT RINGS IN GAP)

PHOTO #46:



TRUSS E - BOTTOM CHORD SPLIT AT WEST HEEL

PHOTO #47:



TRUSS F - SMALL BOTTOM CHORD SPLITS AT EAST HEEL

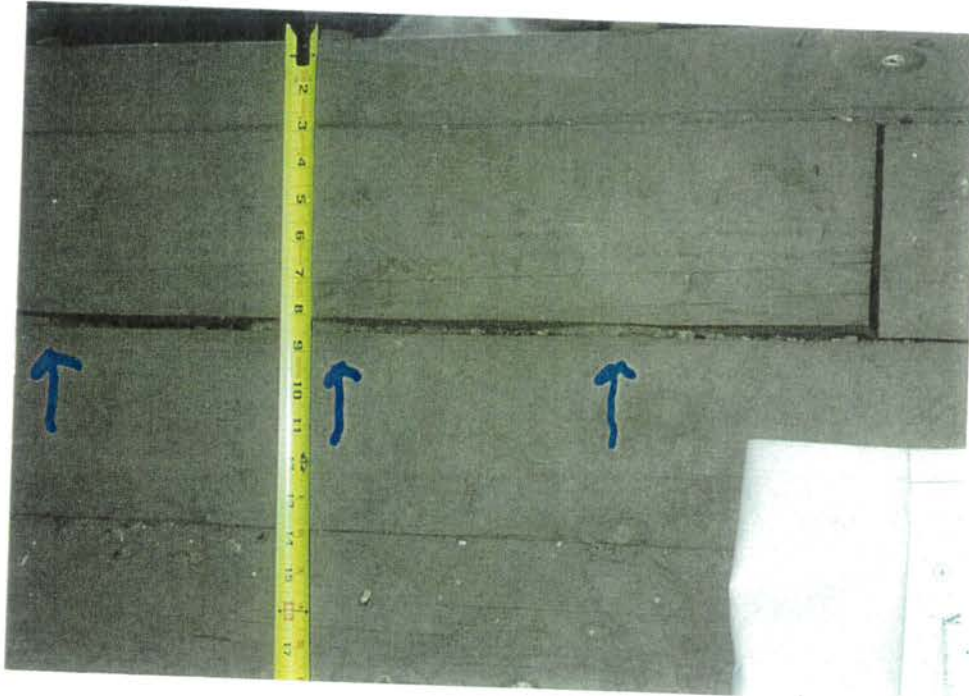
PHOTO #48:



TRUSS F - SMALL BOTTOM CHORD SPLITS AT EAST HEEL

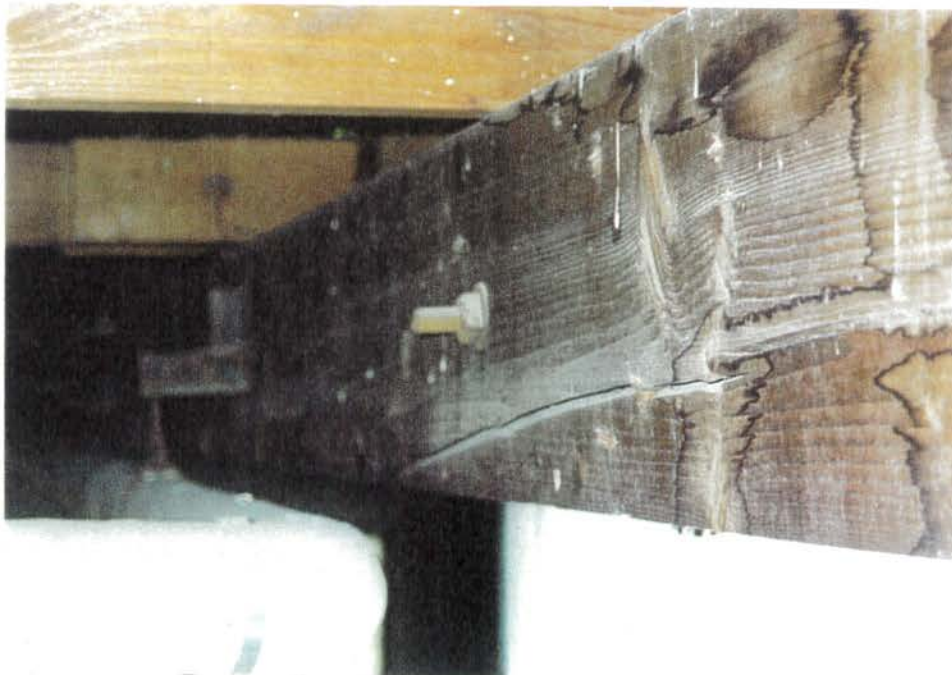


PHOTO #49:



TRUSS F - LOOSE SIDE PLATE BOLTS AT SPLICE 1  
(NOTE: SPLIT RING IN GAPS)

PHOTO #50:



TRUSS F - BOTTOM CHORD SPLIT



PHOTO #51:



TRUSS F - BOTTOM CHORD SPLIT

PHOTO #52:



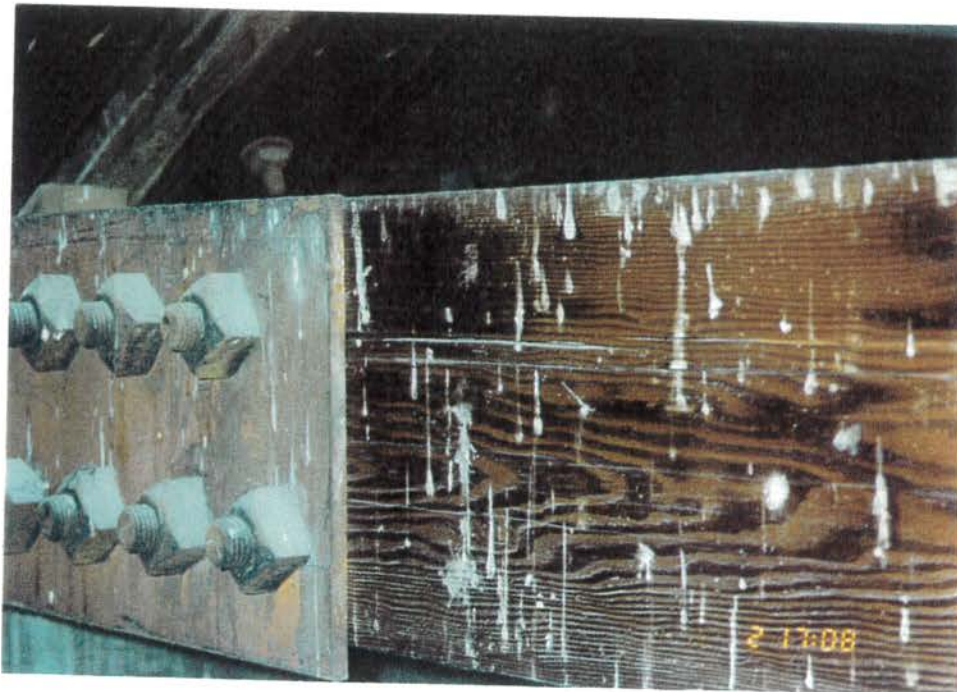
TRUSS F - SPLIT SIDE PLATE AT 5  
(NOTE: SPLIT BOTTOM CHORD BEYOND)

PHOTO #53:



TRUSS F - BOTTOM CHORD SPLIT AT WEST HEEL

PHOTO #54:



TRUSS F - BOTTOM CHORD SPLIT AT WEST HEEL



PHOTO #55:

MEASURING  
TRUSS WEB  
FOR PLUMB



PHOTO #56:



CRACKED JOIST  
(TYPICAL 5 LOCATIONS)



PHOTO #57:

TRUSS TOP  
CHORD SKEWED  
INTO "S"  
CONFIGURATION



PHOTO #58:



BOTTOM CHORD BOWED

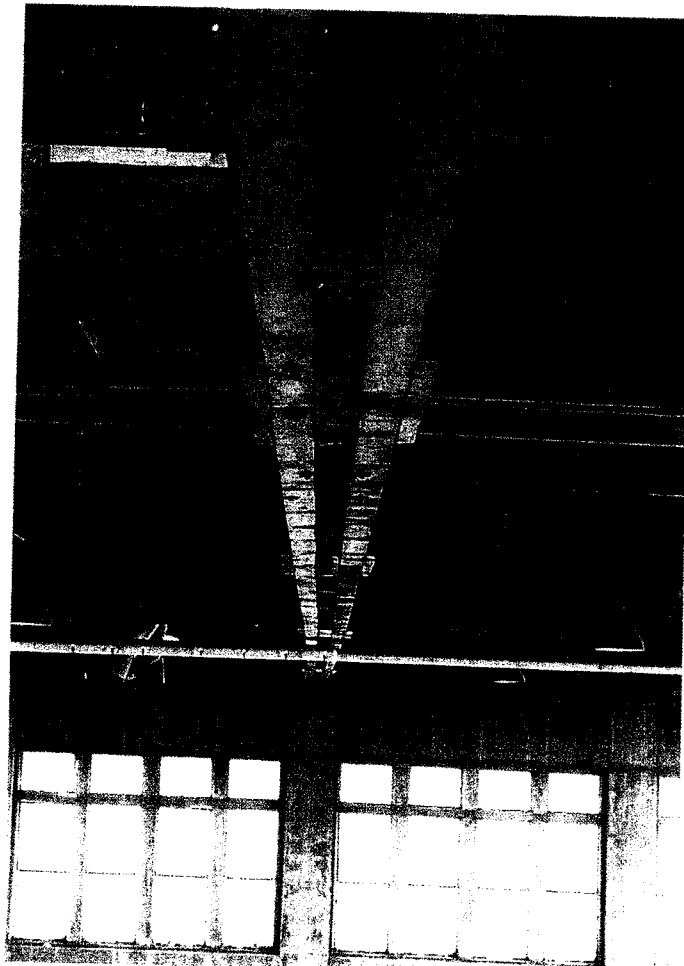
PHOTO #59:

TRUSS TOP  
CHORD SKEWED  
INTO "S"  
CONFIGURATION



PHOTO #60:

BOWED BOTTOM  
CHORD



PE & D #98019AS

PHOTO #61:



RACKED WIND "X" BRACING SOUTH

PHOTO #62:



RACKED WIND "X" BRACING SOUTH



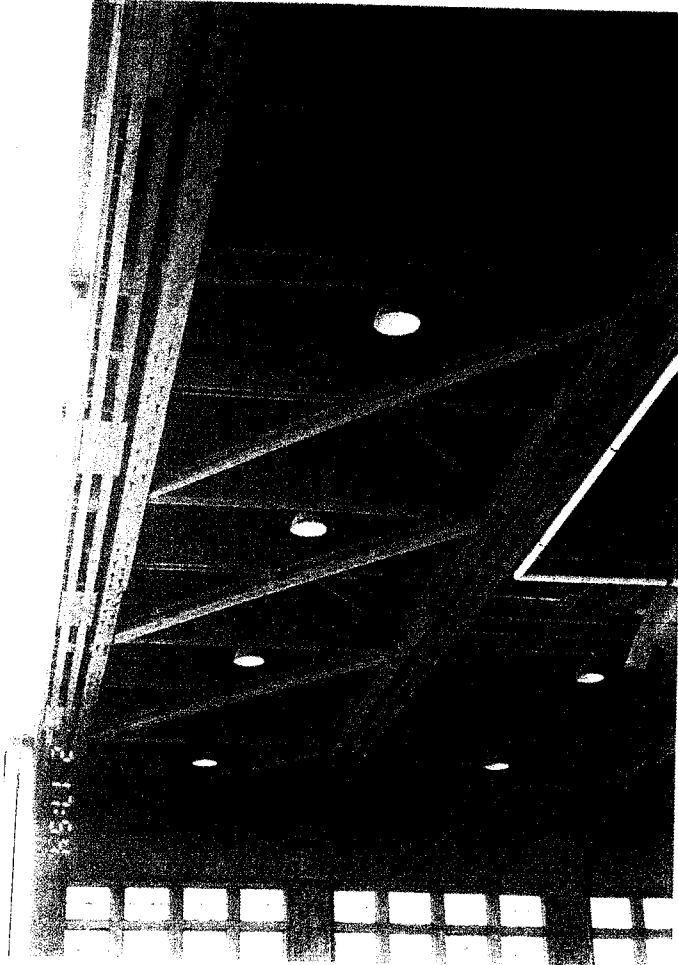
PHOTO #63:

RACKED WIND "X"  
BRACING NORTH



PHOTO #64:

BOTTOM VIEW  
OF WIND TRUSS  
NORTH



PE & D #98019AS

PHOTO #65:



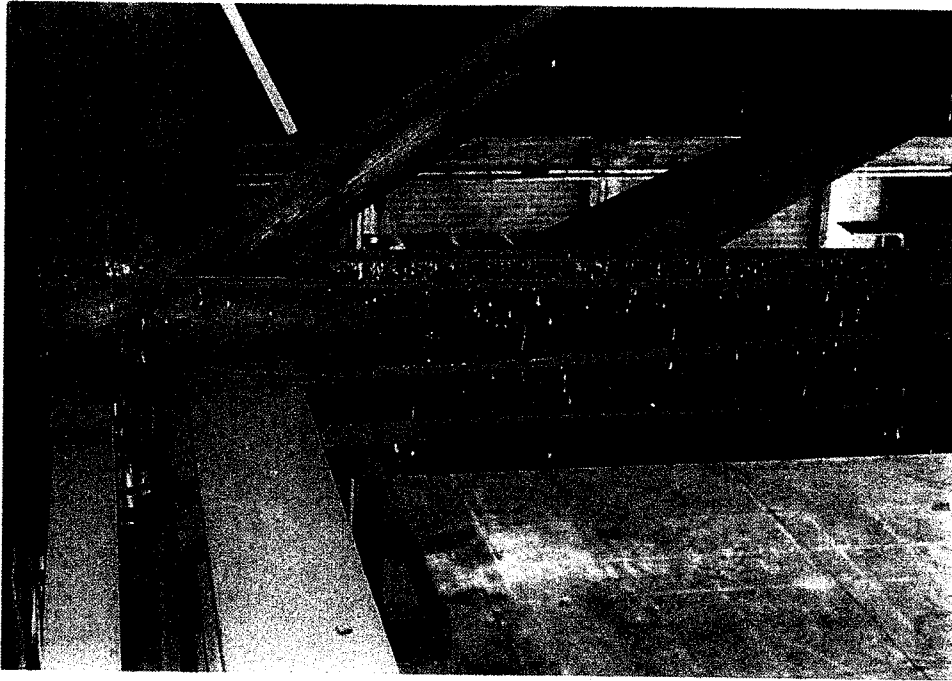
TRUSS F - LOOSE WIND TRUSS ANCHOR BOLT (TYPICAL)

PHOTO #66:



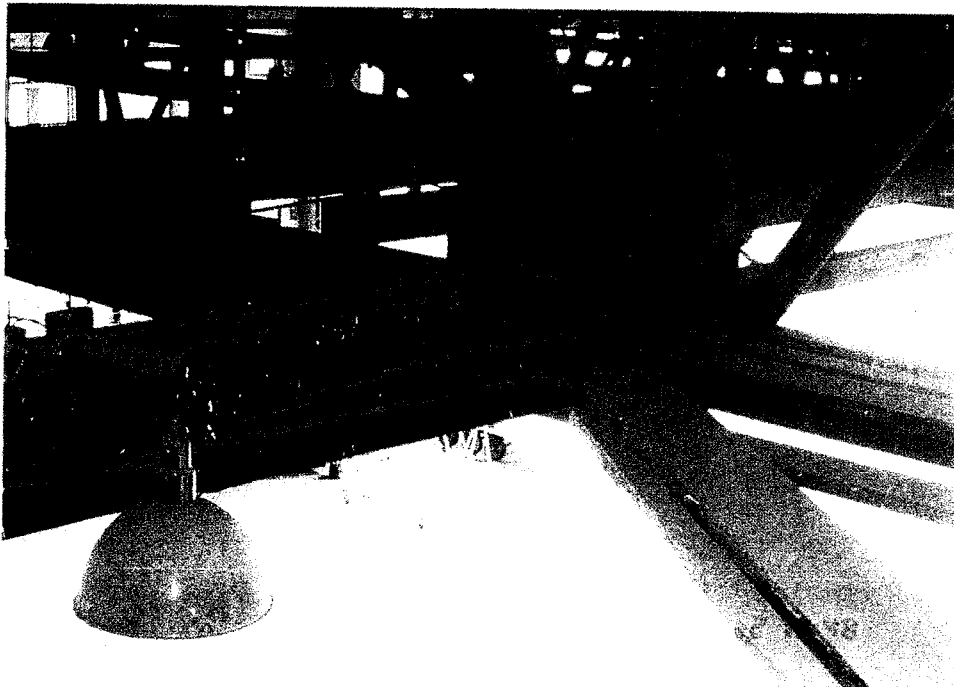
BOTTOM VIEW OF WIND TRUSS SOUTH

PHOTO #67:



TRUSS A - CRACKED WIND BRACE STRUT

PHOTO #68:



TRUSS B - CRACKED WIND BRACE STRUT



PHOTO #69:



TRUSS B - CRACKED WIND BRACE STRUT

PHOTO #70:



TRUSS A - CRACKED WIND BRACE STRUT

PHOTO #71:

CRACKED STUDS  
AT SOUTHWEST  
CORNER OF BUILDING

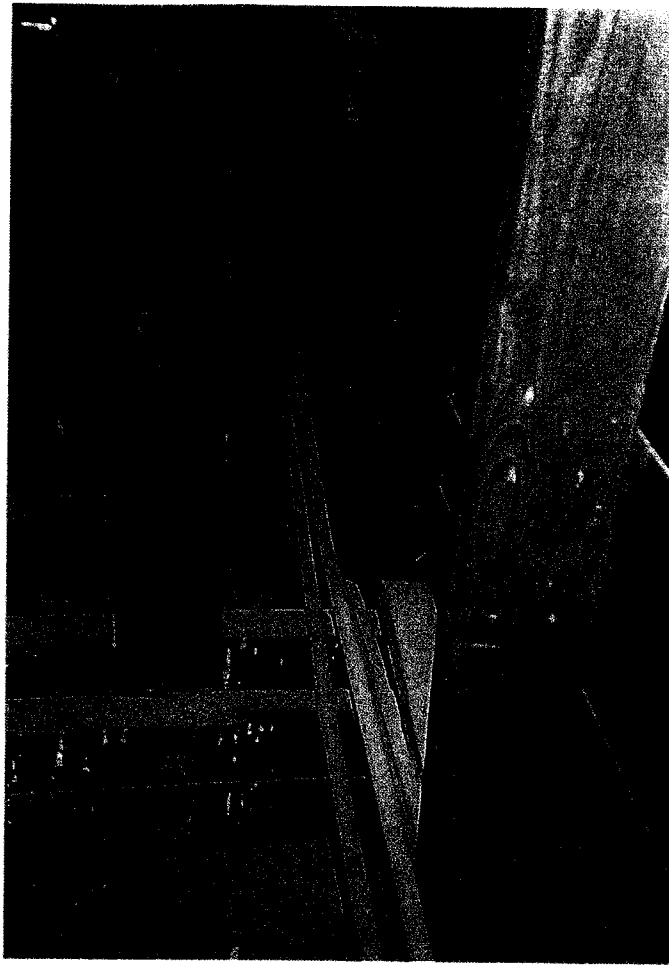


PHOTO #72:

CRACKED STUDS  
AT SOUTHWEST  
CORNER OF BUILDING

